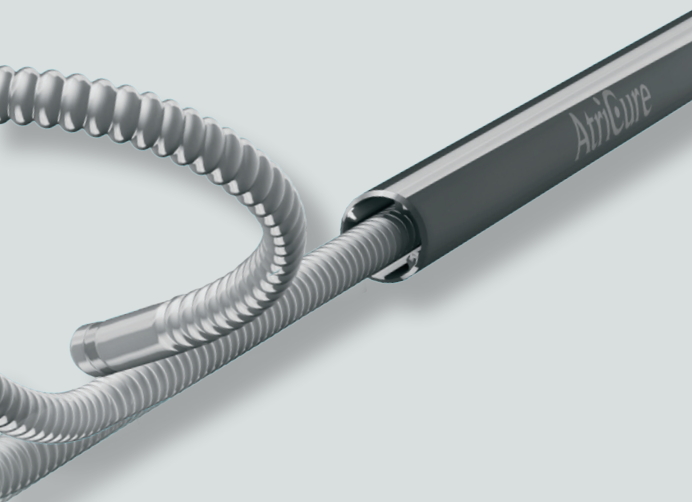


# cryoFORM<sup>®</sup>

- Enhanced Flexibility
- Uniform Lesion
- Engineered for Performance



## Indications

The cryoICE cryoFORM<sup>®</sup> cryoablation probe is indicated for use in the cryosurgical treatment of cardiac arrhythmias by freezing target tissues, creating an inflammatory response (cryonecrosis) that blocks the electrical conduction pathway.

## References

1. Bench Testing Data on file.
2. Lide, D.R. (1998). CRC Handbook of Chemistry and Physics, Ed. 79th Edition. Boca Raton, FL: CRC Press.

**U.S. Indications:** The cryoICE cryoFORM cryoablation probe is indicated for use in the cryosurgical treatment of cardiac arrhythmias by freezing target tissues, creating an inflammatory response (cryonecrosis) that blocks the electrical conduction pathway.

Please review the Instructions for Use for a complete listing of contraindication, warnings, precautions and potential adverse events prior to using this device.

**Rx Only.**

## ATRICURE, INC.

7555 Innovation Way  
Mason, Ohio 45040 USA  
Customer Service: +1 (866) 349-2342  
CustomerService@AtriCure.com  
www.AtriCure.com

PM-US-0155C-1124-G

# cryoFORM<sup>®</sup>

Flexibility Desired,  
Consistency Needed



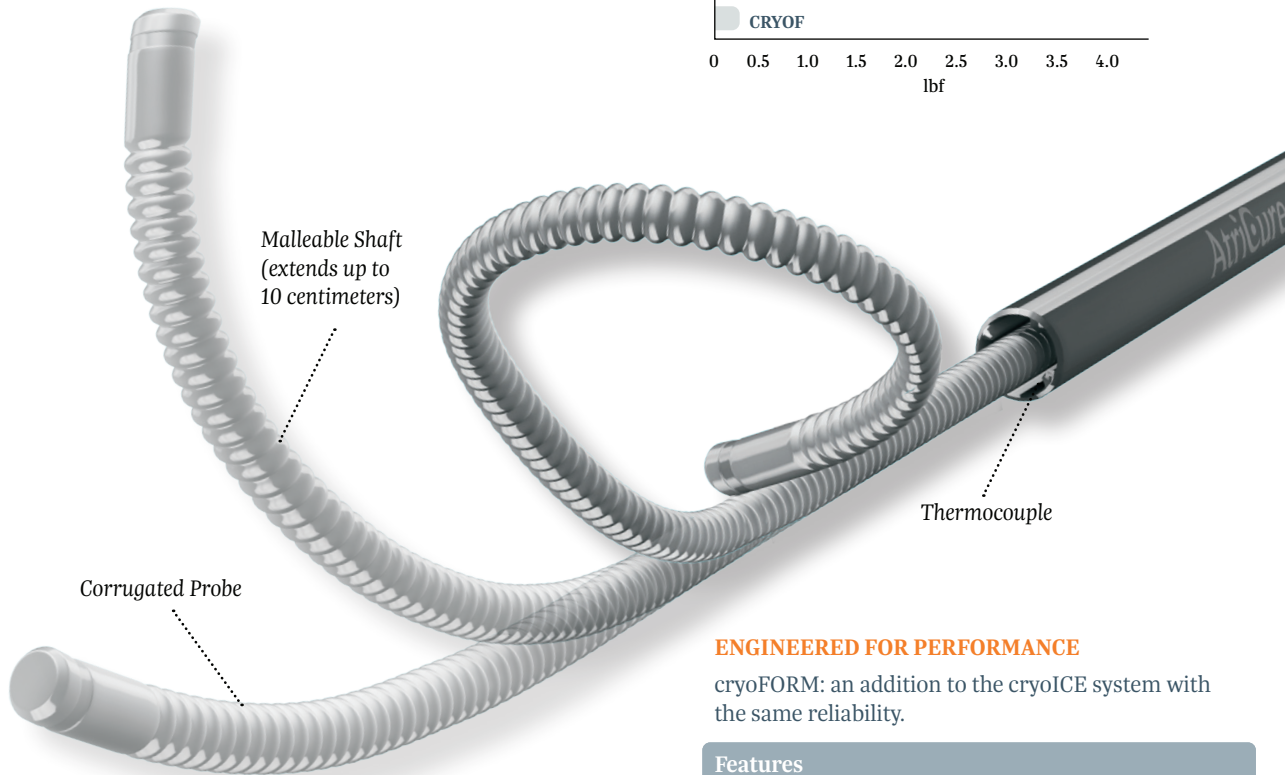
AtriCure

AtriCure

# Flexibility Desired, Consistency Needed

## ENHANCED FLEXIBILITY FOR THE cryoICE® SYSTEM

Average Bending Forces to Bend Probes to 60°<sup>1</sup>



### UNIFORM LESION

cryoFORM maintains a consistent freeze along the length of the probe to achieve reliable cell necrosis. cryoFORM maintains and monitors temperatures through the thermocouple feature to ensure reliable performance. With multiple gas outlets, cryoFORM provides a uniform freeze.

## ENGINEERED FOR PERFORMANCE

cryoFORM: an addition to the cryoICE system with the same reliability.

### Features

<b>Coolant Gas</b>	N <sub>2</sub> O is ideal for rapid cell necrosis with its large capacity for heat removal. Other coolants, such as CO <sub>2</sub> and Ar, have a lower capacity for heat removal.
<b>Active Defrost</b>	Allows tissue to remain frozen and thaw slowly for maximal necrosis.
<b>Thermocouple Placement</b>	Provides highly accurate temperature reading where it matters: at the tissue interface.
<b>Probe Material</b>	Wall thickness minimized to improve heat transfer. <sup>2</sup>

## cryoFORM® PROBE AND cryoICE® SYSTEM

### Malleable Cryoablation Probe

Up to 10 cm freeze length  
**CRYOF**



### cryoICE BOX® - V6

**ACM1** (US)  
**ACM2** (International)



### cryoICE Cart & Upgrade Kits

**ASCS** (cart with double tank holder, US only)  
**ASCC** (single tank holder upgrade)  
**ASCC2** (double tank holder upgrade)

**20 lbs N<sub>2</sub>O tanks not provided by AtriCure**



### Foot Switch (optional)

For use with ACM1/ACM2  
**FTSWTCH**

