

*cryo***SPHERE**[®]

Provides Temporary Post-Operative Pain Relief



**A non-pharmacological/non-opioid solution
that can provide effective post-operative
pain management for several months.**

AtriCure

A non-pharmacological/non-opioid solution for post-operative pain.

How Cryo Nerve Block (cryoNB) Works

1 / HEAT EXTRACTION

The cryoICE system delivers Nitrous Oxide (N₂O) within the probe at a high rate of speed causing the probe to cool and extract heat from surrounding tissue. When the probe is placed on the intercostal bundle, rapid heat extraction causes the intercostal nerve to freeze inducing a well-described process called Wallerian Degeneration.

2 / SCIENCE BEHIND CRYONB

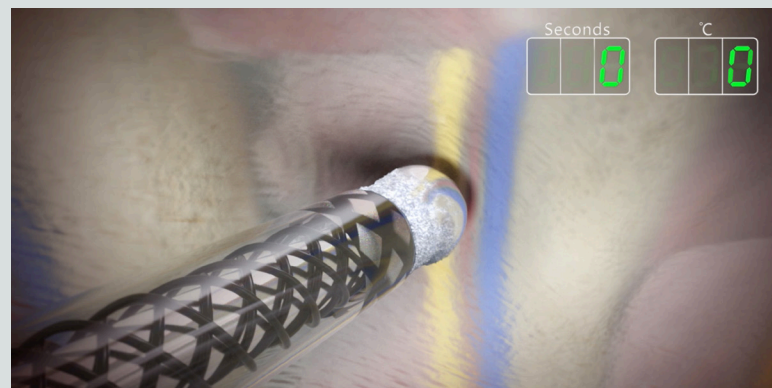
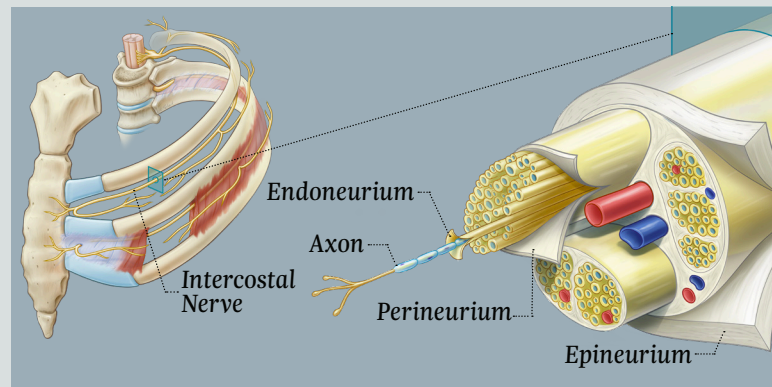
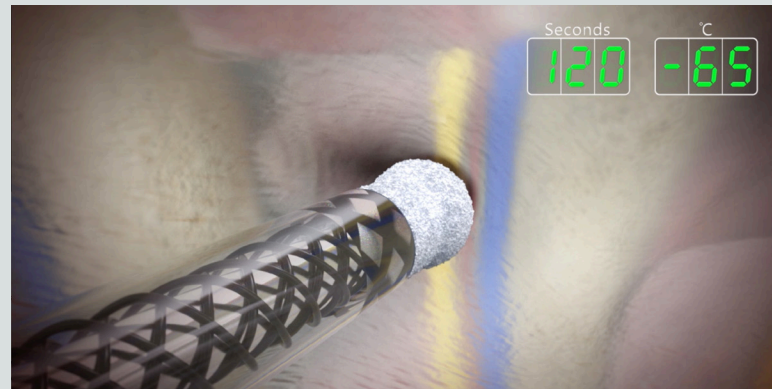
Axons within the intercostal nerve that send pain signals are destroyed distal to the cryoablation site. The tubule structures (epineurium, perineurium and endoneurium) of the nerve remain intact allowing the axons to regenerate and nerve function to resume over the course of several weeks.

3 / TECHNIQUE & TECHNOLOGY MATTER

AtriCure consulted with leading pain management experts to develop a specific protocol for applying cryoNB to the intercostal spaces. AtriCure's cryoICE cryoSPHERE cryoablation probes are sterile, single use devices intended for use in blocking pain by temporarily ablating peripheral nerves.

4 / ACTIVE DEFROST

Active Defrost allows the probe to be easily removed from the cryoablation site avoiding any inadvertent damage to the tubule structures of the nerve.



U.S. Indications: **For Adult Patients** AtriCure's cryoICE® cryoSPHERE® cryoablation probes are sterile, single use devices intended for use performed by freezing target tissues, creating an inflammatory response (cryonecrosis) for blocking pain by temporarily ablating peripheral nerves. **For Adolescent Patients** The cryoICE cryoSPHERE cryoablation probes are intended for use to temporarily block pain by ablating intercostal nerves under direct visualization¹ in adolescent patients of at least 12 years of age.

¹Direct visualization, in this context, requires that the surgeon is able to see the targeted tissue for cryoablation directly or with assistance from a camera, endoscope or other similar optical technology.

Please review the Instructions for Use for a complete listing of contraindications, warnings, precautions and potential adverse events prior to using these devices.

Rx Only.

ATRICURE, INC.

7555 Innovation Way
Mason, OH 45040 USA
+1 (513) 755-4100
+1 (888) 349-2342

CustomerService@AtriCure.com
www.AtriCure.com

PM-US-0016D-0425-G

AtriCure